



**Parker
Stevenson**

BROKERAGE CORP

4030 Truxel Road
Suite D
Sacramento, CA 95384
www.parkerstevenson.com

4030 Truxel Road

Natomas Business Crossing



- Great visibility from Truxel Road
- Convenient Parking
- Building Signage Available
- Multiple private offices/treatment rooms.
- +/-2,157 RSF
- Easy Access to I-80 and I-5
- Attractive finishes throughout
- Kitchette with Dishwasher

For more information,
please contact:

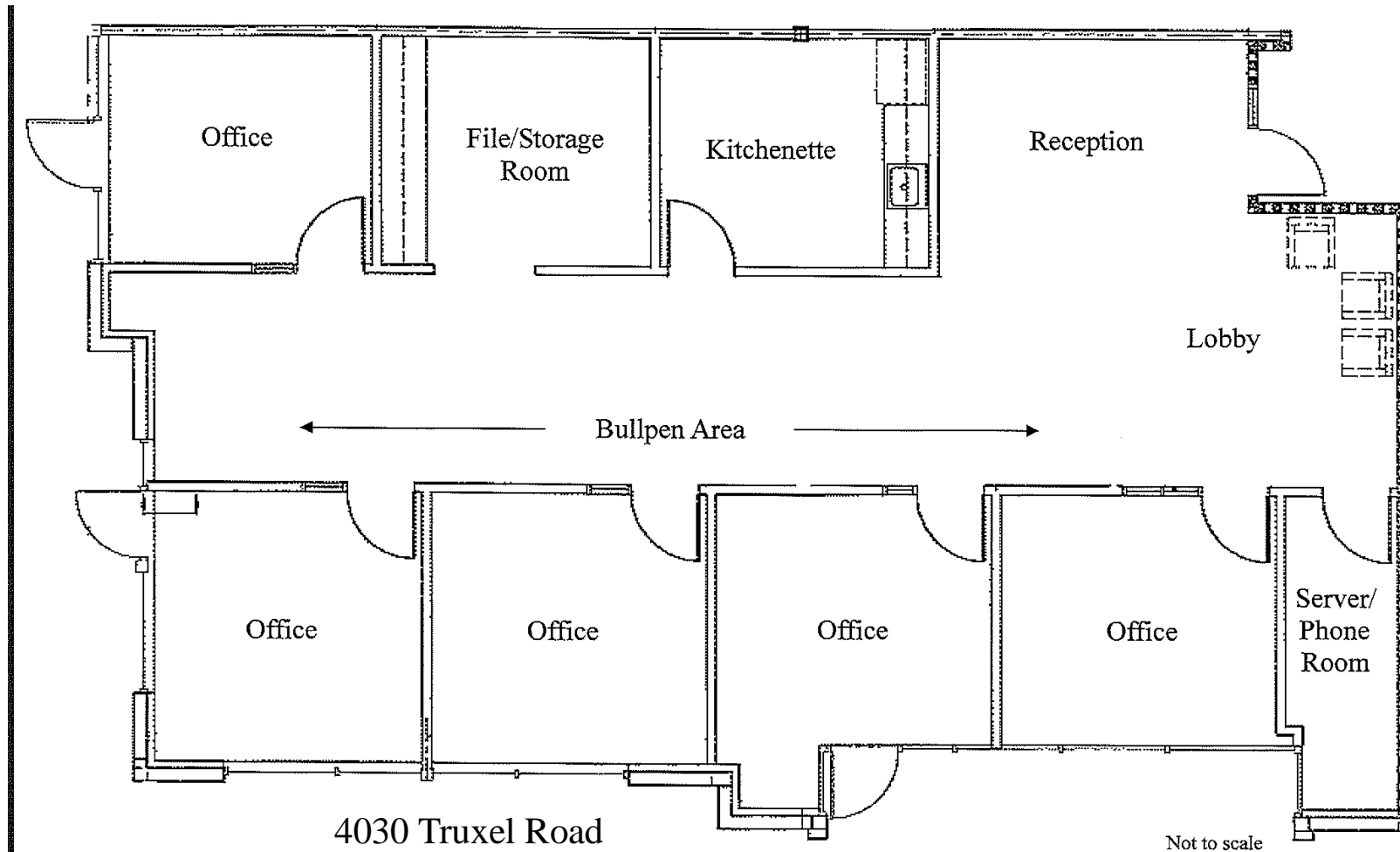
Mindee Menigoz
916-928-3800
mindee.menigoz@sbcglobal.net
DRE License # 01754522



**Parker
Stevenson**

Floor Plan

**Natomas Crossing Business Center
4030 Truxel Road, Suite C
Sacramento, CA 95834**



4030 Truxel Road
Suite C
+/-2,157 RSF

Not to scale

The information provided herein has been given to us by sources we deem to be reliable. We have no reason to doubt its accuracy, but we do not guarantee it. All information should be verified before lease or purchase.

For more information, please contact:
Mindee Menigoz 916-928-3800



**Parker
Stevenson**

**Natomas Crossing Business Center
4030 Truxel Road, Suite C
Sacramento, CA 95834**



2013 Demographics

Average HH Income:

1 Mile:	\$67,601
3 Miles:	\$76,264
5 Miles:	\$64,238

Population:

1 Mile:	9,837
3 Miles:	115,393
5 Miles:	207,672

The information provided herein has been given to us by sources we deem to be reliable. We have no reason to doubt its accuracy, but we do not guarantee it. All information should be verified before lease or purchase.

For more information, please contact:
Mindee Menigoz 916-928-3800